



## DUPLEX SPACE SAVER HIGH EFFICIENCY DRY CLAW MEDICAL VACUUM SYSTEMS 2 THROUGH 8.7 HP

The EMSE CORPORATION continuous duty space saver Medical Vacuum system is a completely packaged NFPA 99 and NEC compliant assembly featuring high efficiency dry claw vacuum pumps, a U.L. listed electrical control cabinet, an ASME receiver and the necessary accessories required to meet and exceed the current code requirements. All components are pre-piped and pre-wired to single-point service connections. The only field connections are air intake, air discharge and power connection at the control panel. All interconnecting piping as well as wiring is completed and operationally tested prior to shipment. Liquid tight conduit, fittings and junction boxes are provided for all control and power wiring.

The medical vacuum pumps are continuous duty, high efficiency, oil-less and frictionless compression claw type, equipped with intake filters and exhaust mufflers. Each vacuum pump is driven by a 3 phase, 60 cycle, TEFC NEMA C-face motor.

The system includes a vacuum storage tank of ASME construction rated for full vacuum service. The tank is equipped with a vacuum gauge, valved by-pass and manual tank drain.

Also included as standard equipment for each vacuum pump are: inlet check valve, inlet isolation valve, safety relief valve, inlet filter, vacuum control switch, bronze or stainless steel flexible connectors on inlet and discharge lines as well as copper tubing with shut-off cock for gauge and vacuum switches.

The system includes a UL listed control panel in a NEMA 12 enclosure. The panel includes the following standard accessories for **each** pump: externally operable circuit breaker with a door interlock, control circuit transformer with fused primary and secondary coils, H-O-A switch, run light, hour meter, magnetic starter with 3 leg overload protection and reset switch and minimum run timer to prevent short cycle operation. The panel is equipped with a multiple position selector switch for selection of normal operation (automatic alternation) or manual selection of lead and lag pumps if one of the pumps is taken out of service due to scheduled maintenance.

Local "Backup in use" audible and visual alarms are provided per NFPA 99. The alarm includes an indicating light as well as the horn. The audible alarm can be acknowledged with the "Silence" button. The visual alarm will remain energized until the problem has been



corrected. Each alarm function includes a set of dry contacts for connection to the master alarm. All control and alarm functions will remain energized while any vacuum pump in the system remains electrically on-line.

Field adjustable control switches are pre-set to operate the lead vacuum pump between 18" Hg and 23" Hg. The stand-by vacuum pump will automatically start at 17" Hg if one of the other vacuum pumps fails to operate.

The Medical Vacuum system and its component parts will undergo a complete electric and pneumatic test prior to shipment.

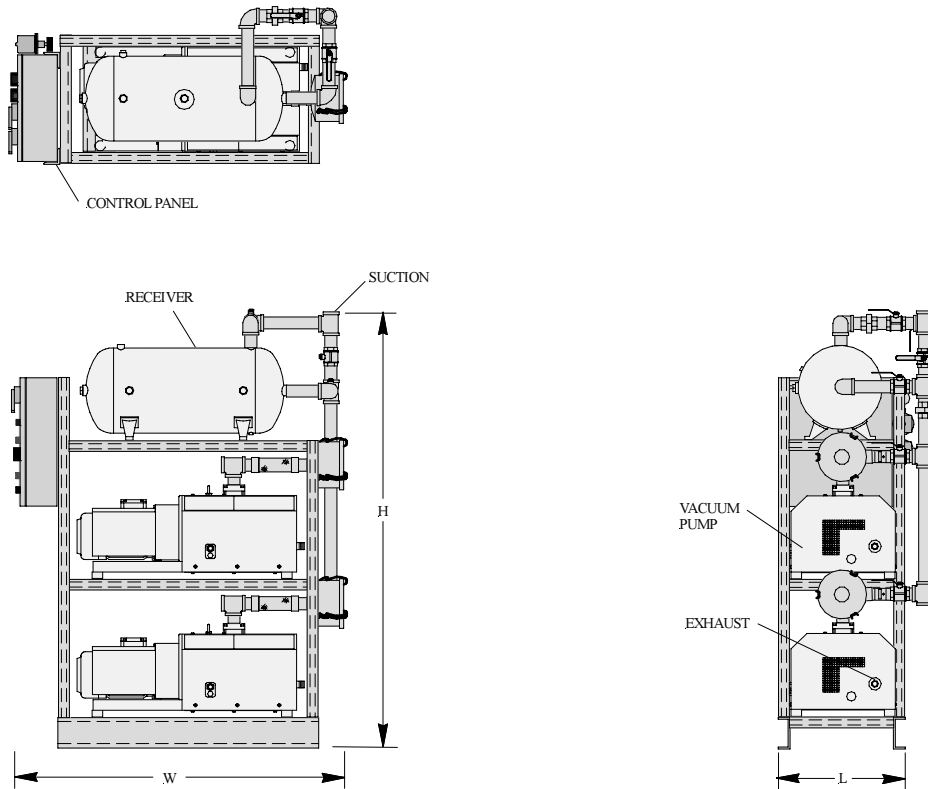
The Medical Vacuum system is guaranteed by the manufacturer for a period of 24 months from the date of start-up or 30 months from the date of shipment (whichever comes first) against defects in design, materials, or construction.

### Optional System Accessories

(only checked options will be supplied)

- Rust protection receiver lining
- Galvanized receiver
- Thermal malfunction shut-down with manual reset and alarm lights
- External intake filters

# **DUPLEX SPACE SAVER HIGH EFFICIENCY DRY CLAW MEDICAL VACUUM SYSTEMS 2 THROUGH 8.7 HP LAYOUT AND PERFORMANCE TABLE**



System Model Number	Horsepower		Capacity SCFM (Each Pump) @19" Hg	Suct. Conn.	Exh. Conn.	Tank (Gal.)	Dimensions, In.			Weight Lbs.
	Each	Total					L	W	H	
1DCB2S30H	2.0	4.0	16	1-1/4"	1"	30	32	68	83	1250
1DCB3S30H	3.0	6.0	21	1-1/4"	1"	30	32	68	83	1290
1DCB4S30H	4.0	8.0	29	1-1/4"	1"	30	32	68	83	1290
1DCB5.4S30H	5.4	10.8	38	1-1/4"	1"	30	32	68	83	1330
1DCB6.4S30H	6.4	12.8	52	2"	1"	30	34	68	83	1580
1DCB7.5S30H	7.5	15.0	69	2"	1"	30	34	71	83	1595
1DCB8.7S30H	8.7	17.4	77	2"	1-1/4"	30	34	74	83	1690

**Notes:** 1. To convert Free Air Capacity (SCFM) to Expanded Air Capacity (ACFM):  
 at 19" Hg multiply SCFM by 2.74  
 2. Maximum ambient temperature: 105°F. For higher ambient temperatures consult factory.

### Power Requirements:

(Two) \_\_\_\_\_ HP Motors, 3 Phase 60 Hertz     208 v     230 v     460 v